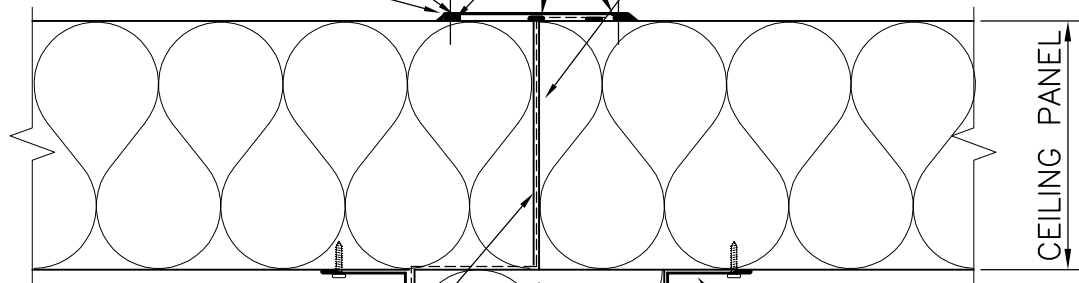


C'BOND FLASHING 0.6mm  
FIXED WITH  
8g x 16mm LG. FLAT HD  
SELF DRILLING/TAPPING  
CLASS 3 SCREWS FIXED  
@ 300 CTRS.

VAPOUR SEAL  
(MASTIC)

FOAM FILL ANY GAPS  
2 PART POLYURETHANE

BOSTIK BACKSEAL  
FLASHING JOINT



0.25 mic x 250mm POLYTHENE  
VAPOUR BARRIER BETWEEN CEILING  
MASTIC SEAL PVC TO MAINTAIN  
CONTINUITY OF VAPOUR BARRIER

50x50x0.6mm C/BOND ANGLE  
TO MATCH WALL PANEL

8g x16mm LG.  
SELF DRILLING/TAPPING  
CLASS 3 SCREWS FIXED  
@ 300mm CTRS

CHILLER

FREEZER

## CEILING CONNECTION CHILLER TO FREEZER

### NOTES:

1. ALL PANELS TO BE FM APPROVED, POLYPHEN, KINGSPAN, OR METECNOPANEL.
2. 4.8mm STEEL RIVETS MAY BE USED IN LIEU OF 8gX16mm SELF TAPPING SCREWS.
3. PANEL TO PANEL JOINTS TO BE SEALED WITH FOSROC OR SELLEYS COLDROOM MASTIC OR SIMILAR



**Retracom**

*Insulated Panel Systems*

60 Magnesium Dr Crestmead, QLD. 4132  
Tel: (07) 3803 4733, Fax: (07) 3803 4711  
Email: sales@retracom.com.au

Title: CEILING CONNECTION CHILLER TO FREEZER - FM STANDARD

For: ...

Job No.: ...

Date Drawn:  
21.08.06

By: C.L.

Dwg. No.:

Revision: ...

Scale:  
N.T.S.

Sheet  
(204) A4

Sheet 1 of 1

**FM-TOP-03**

...