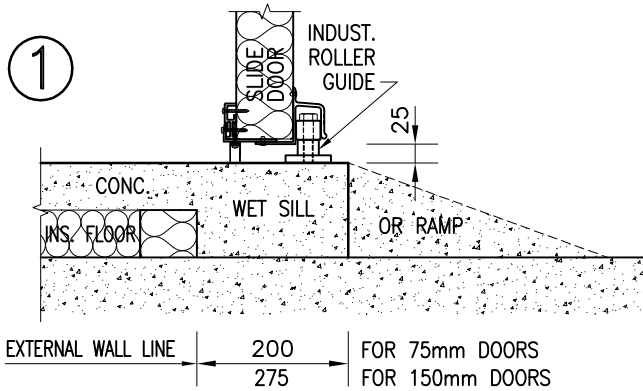
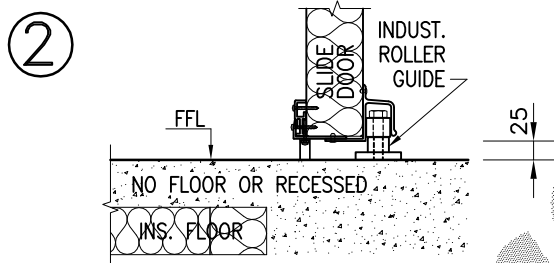


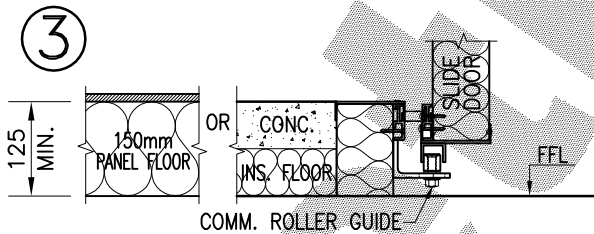
SLIDE DOORS



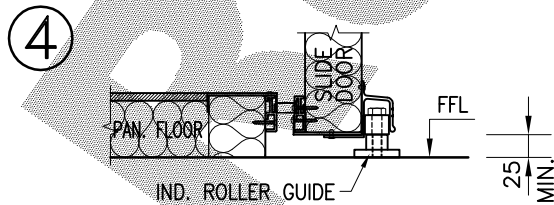
"WIPER" SILL DOOR



"WIPER" SILL DOOR



"STEP-UP" COMM. SILL



"STEP-UP" IND. SILL (PANEL FLOORS)

* NOTE: * PACKER REQUIRED UNDER GUIDE WHEN FLOOR EXCEEDS 100mm

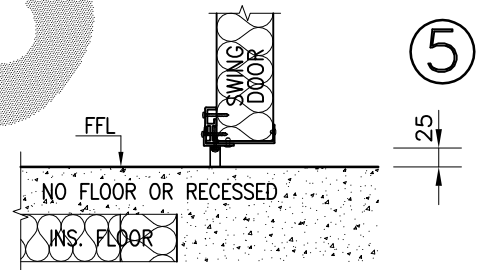
CUSTOMER:

JOB No.

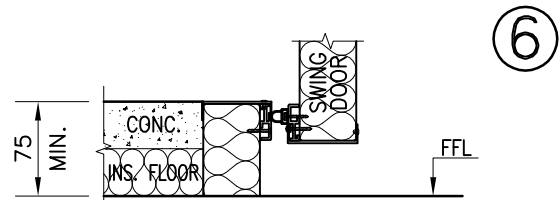
PLEASE NOTE DOOR TYPES:

* "WIPER" & "STEP-UP"

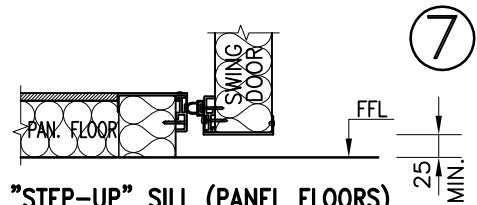
SWING DOORS



"WIPER" SILL DOOR



"STEP-UP" SILL (INSITU FLOORS)



"STEP-UP" SILL (PANEL FLOORS)

* NOTE: * DIMENSIONS ARE IN "mm" * DO NOT SCALE



Retracom
Manufacturing

60 Magnesium Drive
Crestmead, QLD. 4132
Telephone: (07) 3803 4733
Facsimile: (07) 3803 4711
Email: sales@retracom.com.au

COPYRIGHT ©

Title: **DOOR SILL DETAILS**

For: **"WIPER" & "STEP-UP"**

Job No.:

Date Drawn:
FEB 2010

By:

J.B.

Dwg. No.:

SDC-22-001-01

Revision:

Scale:
N.T.S.

Sheet
A4

Sheet 1 of ...

...